

WELCOME TO

HIGHAM LANE


**SIXTH FORM**

**EXPERIENCE DAY**

**2023**

MONDAY 3RD JULY

AFTERNOON SESSION



**Higham Lane Sixth Form Year 12 Experience Day Programme**  
**Monday 3rd July 2023**

<b>TIME</b>	<b>TASTER LESSONS</b>
1.00pm	Welcome
1.15pm–1.45pm	Chemistry, Criminology, Economics, English Literature, Maths and Psychology.
1.45pm–2.15pm	Art, Business, Chemistry, English Language, Politics, Physics and Psychology.
2.15pm–2.45pm	Biology, Business, Further Maths, Geography, Law and Sociology.
2.45pm–3.15pm	Biology, Criminology, History, Maths and Physical Education.

The Sixth Form Café will be open during the afternoon until 2pm if you wish to purchase any food or drinks. The Café only allows card payments (cashless).

Complimentary light refreshments will be available during the afternoon in the Conference Room.

Throughout your visit, there will be sixth form students available for questions.

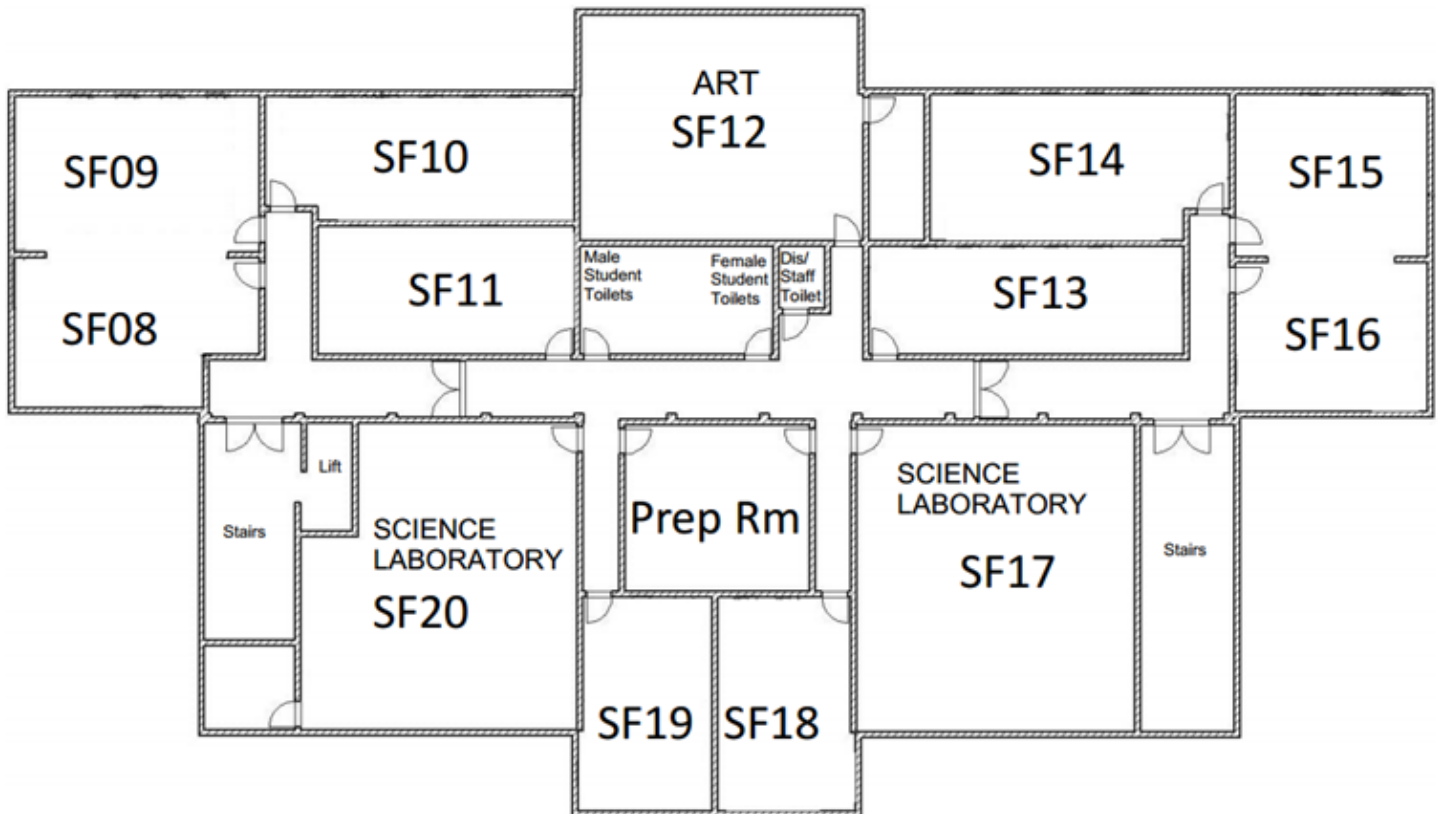
## Year 12 Experience Day Schedule

Monday 3rd July 2023

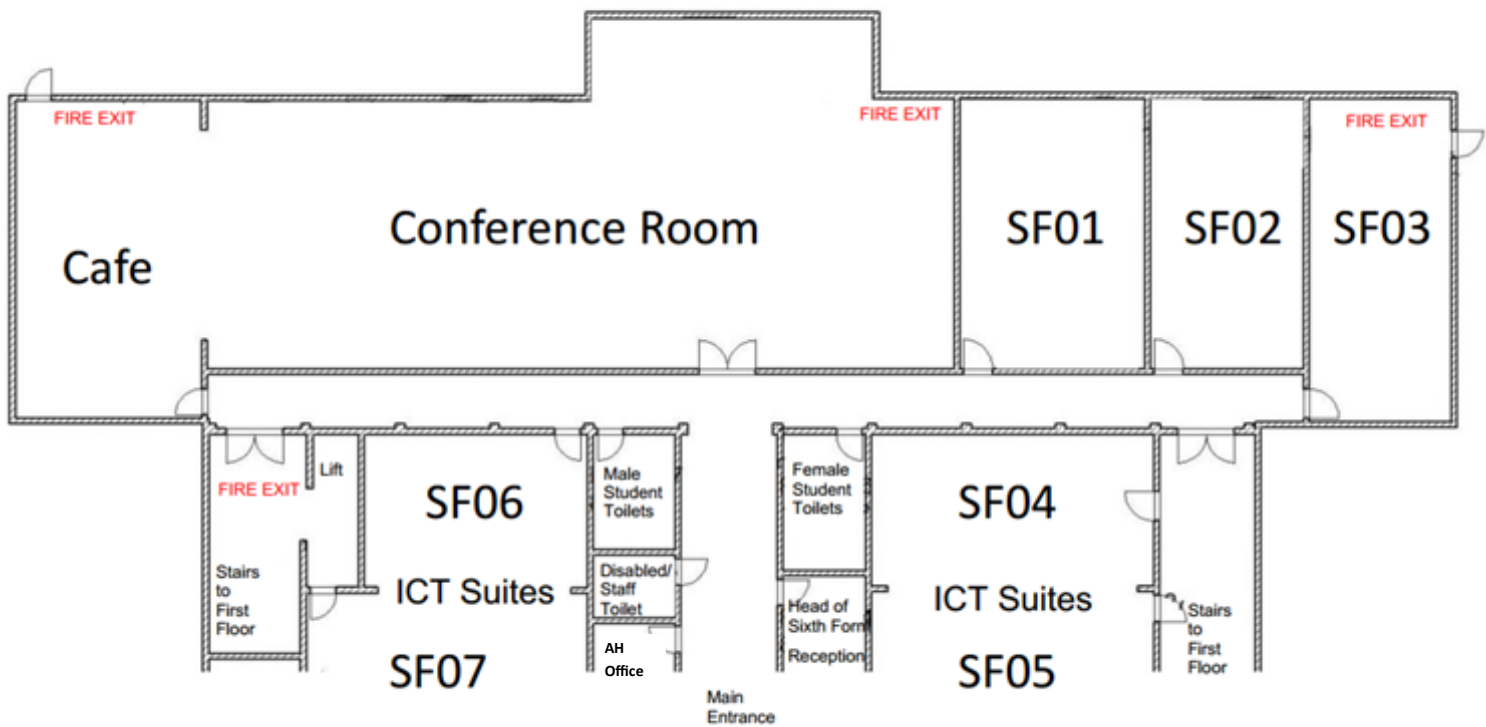
	<b>Subject</b>	<b>Room</b>
<b>1.15pm–1.45pm</b>	Chemistry	SF17
	Criminology	SF02
	Economics	SF14
	English Literature	SF18
	Maths	SF10
	Psychology	SF01
	<b>1.45pm–2.15pm</b>	Art
Business		SF07
Chemistry		SF17
English Language		SF19
Politics		SF08
Physics		SF20
Psychology		SF01
<b>2.15pm–2.45pm</b>	Biology	SF20
	Business	SF07
	Further Maths	SF11
	Geography	SF16
	Law	SF02
	Sociology	SF03
<b>2.45pm–3.15pm</b>	Biology	SF20
	Criminology	SF02
	History	SF09
	Maths	SF10
	Physical Education	SF15

# Map of the Sixth Form

## FIRST FLOOR



## GROUND FLOOR



**Subjects on offer (select a subject from each column)**

**Subjects – you should pick no more than one subject from each column (Block A, B, C and D). A minimum of three subjects is required.**

<b>Block A</b> (A-levels)	<b>Block B</b> (A-levels)	<b>Block C</b> (A-levels)	<b>Block D</b> (A-levels)
Chemistry	Art	Biology	Biology
Criminology (voc)	Business	Business	Criminology (voc)
Economics	Chemistry	Further Maths	History
English Literature	English Language	Geography	Maths
Maths	Politics	Law	Physical Education
Psychology	Physics	Sociology	
	Psychology		

## Entry Profile – September 2023

Entry to A level courses requires 5 or more GCSEs at grade 9-4 in different subjects. We strongly recommend that this includes a minimum GCSE grade 4 in English Language and Mathematics. Resits in GCSE Mathematics and English Language will be offered.

Helpful and effective information, advice and guidance is important to us. At enrolment, we are prepared to have a conversation with any student who has not fully met the entry profile.

All subjects will be offering the two year linear A level/vocational route. AS level qualifications will not be offered.

Subject	6 required at GCSE	Other requirements	Other information
Biology	Y (in Biology or Combined Science)	Grade 6 in Mathematics.	
Business*	Y		Your GCSEs in English Language and other subjects will be considered
Chemistry	Y (in Chemistry or Combined Science)	Grade 6 in Mathematics	
Criminology* (vocational)			Your GCSEs in English Language and other subjects will be considered
Economics*		Grade 5 in Mathematics is strongly recommended	Your GCSEs in English Language and other subjects will be considered
English Language	Y		A Grade 5 in both English Language and English Literature will also be accepted.
English Literature	Y		A Grade 5 in both English Language and English Literature will also be accepted.
Fine Art*	Y		
Further Mathematics		Grade 7 and above in Mathematics	
Geography	Y		
Politics*			Your GCSEs in English Language and other subjects will be considered
History	Y		
Law*			Your GCSEs in English Language and other subjects will be considered
Mathematics	Y		
Physical Education	Y	Grade 5 or above in Biology or Combined Science is required and Grade 5 in Mathematics is strongly recommended	Frequent participation in a physical activity (including coaching) is an essential requirement of the course.
Physics	Y (in Physics or Combined Science)	Grade 6 in Mathematics	
Psychology*		Grade 5 in English Language is strongly recommended	Your GCSEs in English Language and other subjects will be considered
Sociology*	Y		Your GCSEs in English Language and other subjects will be considered
<b>* A GCSE/Vocational qualification in this subject is not a prerequisite to study this course in our Sixth Form.</b>			

# Notes